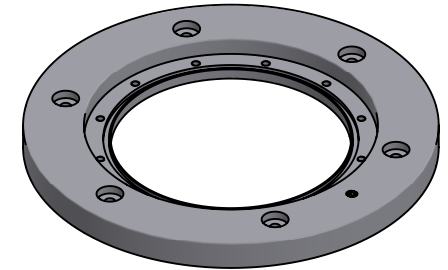
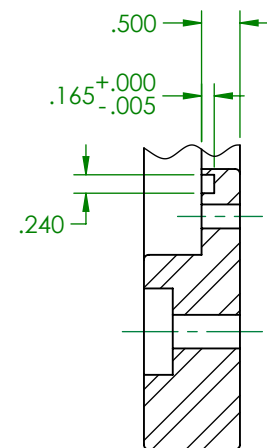


SECTION A-A



SCALE 1:8

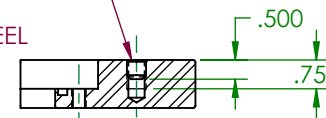


DETAIL C
SCALE 2:5

NOTE:

1. STANDARD ADAPTER PLATE IS FURNISHED AS SHOWN. IF AZIMUTH CORRECTION IS REQUIRED, IT MUST BE SPECIFIED WHEN ORDERED.
2. MATERIAL-ASTM A572 GR 50
3. FINISH-HOT DIP GALVANIZED PER ASTM A123.
4. (6) 3/8-16 UNC X 2" LG STAINLESS STEEL HEX HEAD BOLTS WITH CEC LOCK WASHERS AND AN "O" RING ARE INCLUDED WITH THE ADAPTER PLATE.

1/2-13 UNC SOCKET SET SCREW, STAINLESS STEEL



SECTION B-B

TOLERANCES UNLESS SHOWN
FRACTIONS $\pm 1/32$
DECIMAL $\pm .03$
ANGLES $\pm 0^\circ 30'$

DWN: DOUG F.

DATE: 8/10/2017

SCALE: NTS

SHEET 1 OF 1

L-868 TYPE B ADAPTER PLATE



MILLERBERND

622 6TH ST. SO.
WINSTED, MN
55395

178A0125