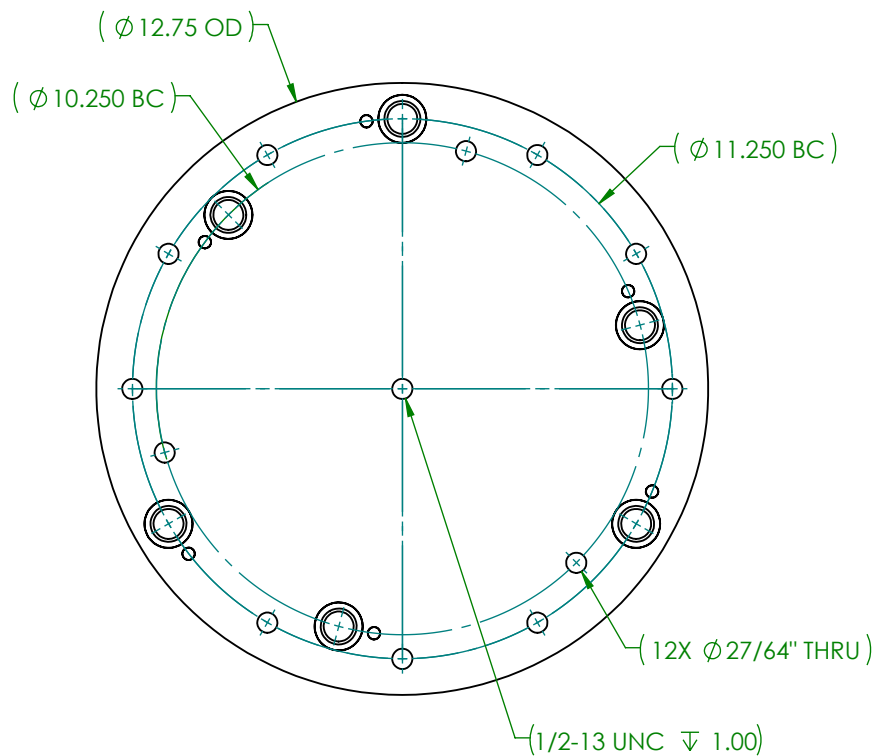
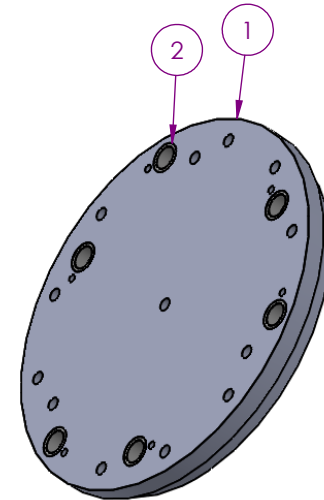
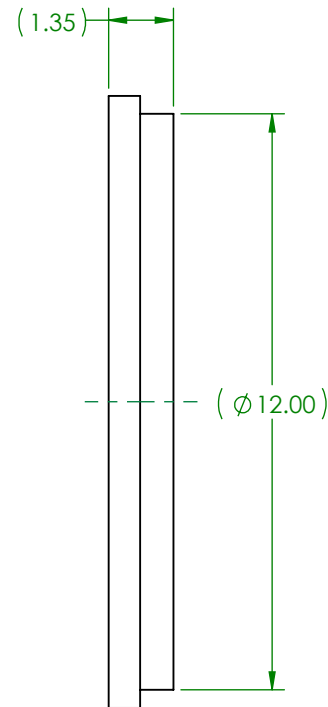


ITEM NO.	PART NUMBER	DESCRIPTION	QTY.
1	A10-1125RIFP	L-867/L-868 DRILL JIG PLATE	1
2	3556N181	3/4" BUSHING OD X 1/2" LONG	6




**A10-1125RIF DRILL JIG  
PLATE W/LINER BUSHINGS**

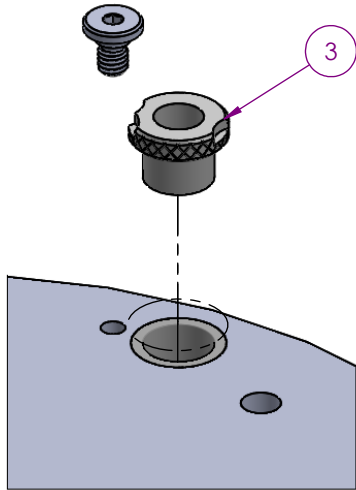
WEIGHT - 44.1



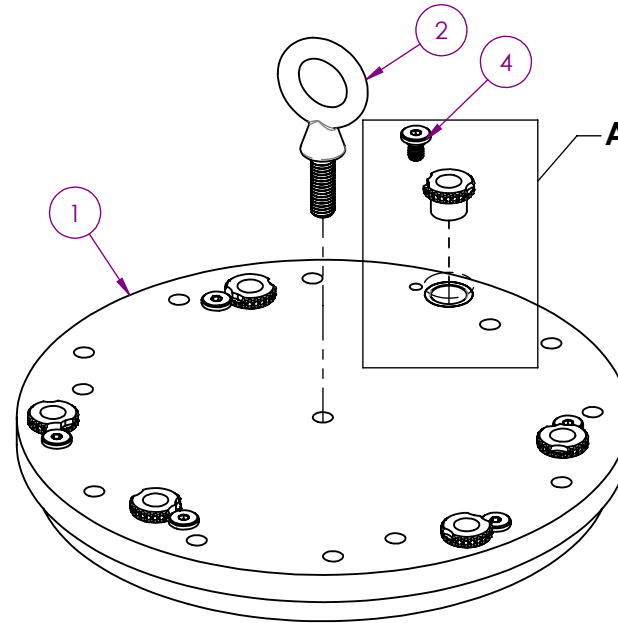
MMC REV.	DESCRIPTION	DATE
4	ADDED HARDWARE TO 6 HOLES	6/18/2024
3	MOVE HARDWARE	12/14/2020
2	UPDATE HARDWARE	11/3/2020
1	LINER BUSHING QTY WAS 6; ADD SHT 2, DRILL JIG KIT	3/1/2018
0	ISSUED	9/25/2017
REVISIONS		

DWN: DOUG F.	A10-1125RIF	REV
DATE: 9/15/2017		4
CHK:	 622 6TH ST. SO. WINSTED, MN 55395	SHEET 1 OF 2
SCALE: 1:4		


ITEM NO.	PART NUMBER	DESCRIPTION	QTY.
1	A10-1125RIF	L-867/L-868 DRILL JIG FOR REPLACEABLE INSERTS	1
2	BOLTC1-2-13X1-1-2E	EYE BOLT 1/2-13 X 1-1/2" ZINC	1
3	8493A249	.5813 ID 3/4" OD 1/2" LAG DRILL BUSHING	6
4	8496A31	LOCK SCREW 5/16-18 X 1/2" FOR 3/4" BUSHING	6



**DETAIL A  
SCALE 1:2**



**DRILL JIG KIT**

DWN: DOUG F.	A10-1125RIF	REV
DATE: 9/15/2017		4
CHK:	 622 6TH ST. SO. WINSTED, MN 55395	SHEET 2 OF 2
SCALE: 1:4		