
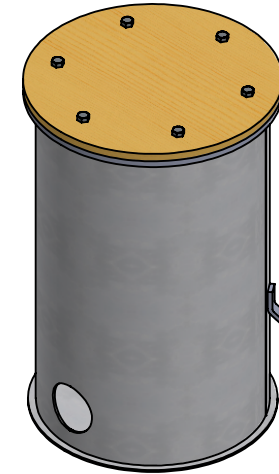
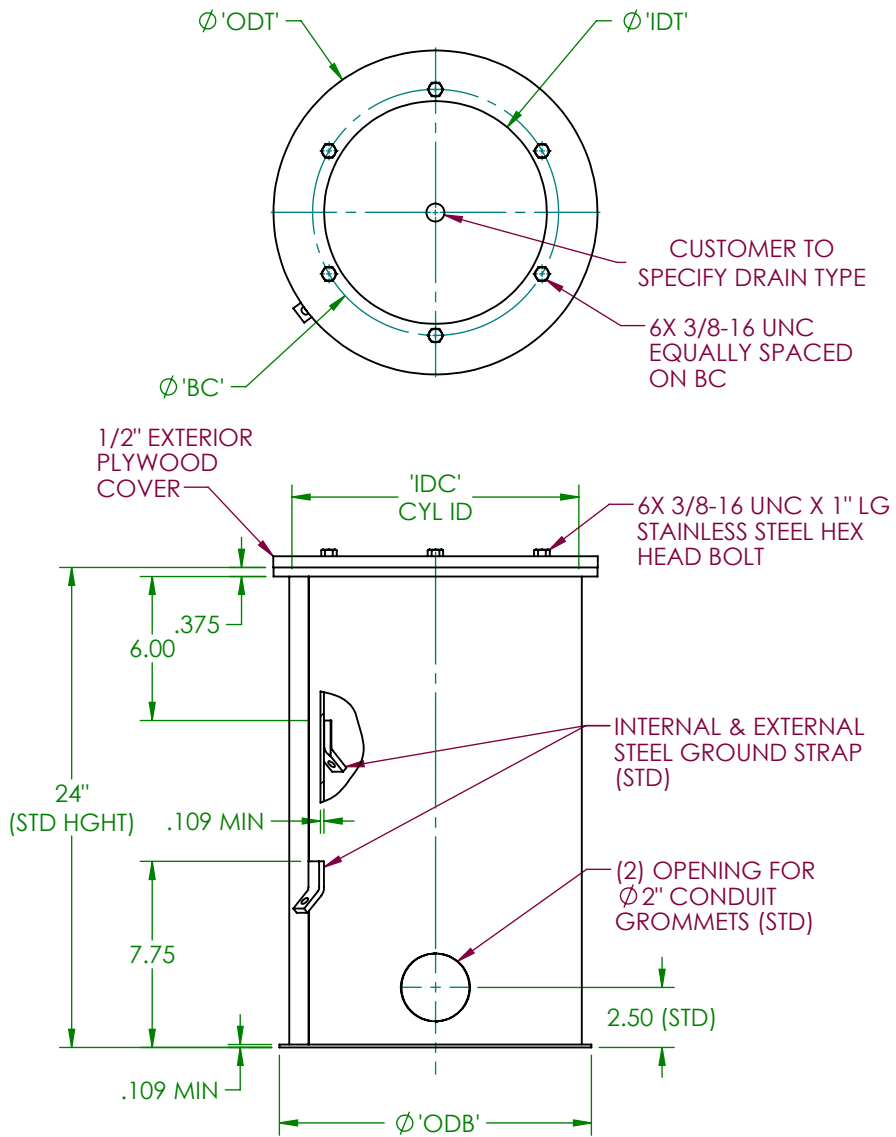


NOTE:

1. 24" IS THE STANDARD HEIGHT; OTHER HEIGHTS ARE AVAILABLE, 36" MAX HEIGHT.
2. TAPPED HOLE PATTERN IN TOP FLANGE IS ALIGNED WITH CENTERLINE OF COUPLINGS.
3. Ø2" COUPLINGS ARE ORIENTED 180° APART. OTHER HOLE LOCATIONS AND/OR SIZES MUST BE SPECIFIED WHEN ORDERING.
4. THREADS INSIDE THE COUPLINGS ARE PROTECTED WITH LDPE PLUGS.
5. PLYWOOD COVER IS 1/2" NOMINAL THICKNESS, GRADE CC.
6. A COPPER GROUND LUG IS INCLUDED.
7. CARBON STEEL BASES ARE HOT DIP GALVANIZED PER ASTM A123.
8. AVAILABLE OPTIONS, SPECIFIED WHEN ORDERING, INCLUDE:
 - DRAIN COUPLING
 - STAINLESS STEEL CONSTRUCTION
 - REPLACEABLE STAINLESS STEEL THREADED INSERTS
9. THIS PRODUCT IS CERTIFIED PER FAA ADVISORY CIRCULAR AC150/5345-42 (CURRENT REV).

FAA TYPE	NOM DIA	MMC TYPE	'ODT'	'IDT'	'BC'	'IDC'	'ODB'
L-867B	12"	127CC	13.500	9.250	10.250	12.250	13.000
L-867D	16"	167CC	17.375	12.375	14.250	16.250	17.375
L-867E	24"	247CC	24.000	20.000	21.500	22.500	24.000


DWN: DOUG F.	L-867 LIGHT BASE WITH COUPLINGS	7CC
DATE: 1/18/2019		
SCALE: NTS	 MILLERBERND [™] 622 6TH ST. SO. WINSTED, MN 55395	
SHEET 1 OF 1		

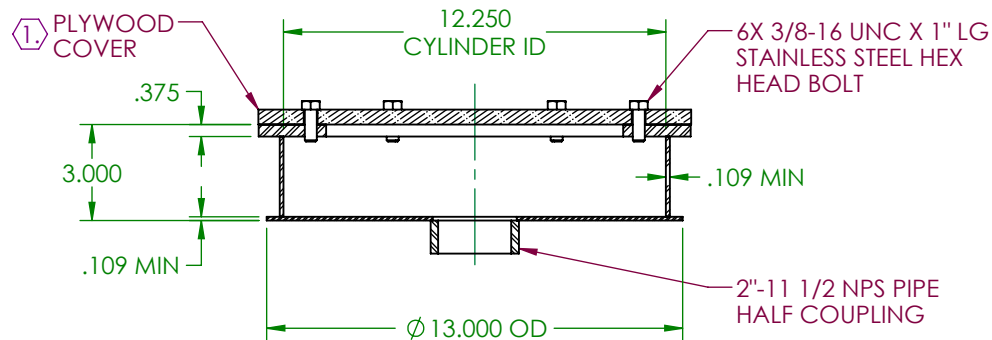
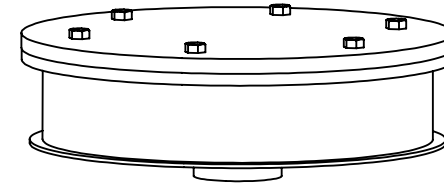
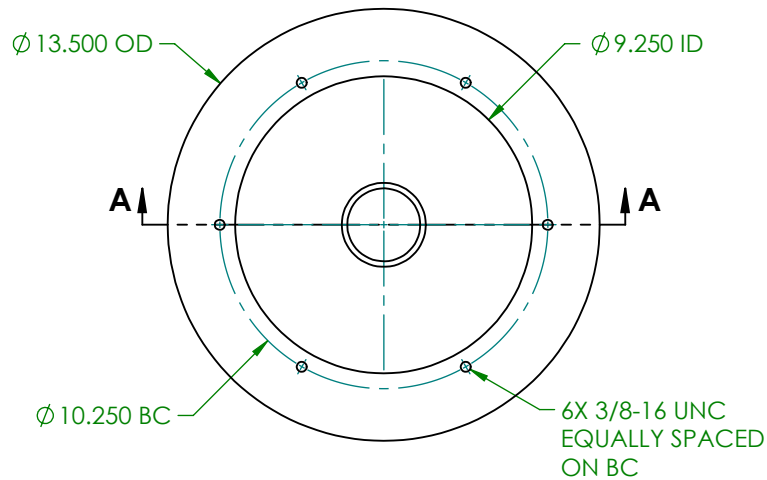


NOTE:

1. 24" IS THE STANDARD HEIGHT; OTHER HEIGHTS ARE AVAILABLE, 36" MAX HEIGHT.
2. TAPPED HOLE PATTERN IN TOP FLANGE IS ALIGNED WITH CENTERLINE OF GROMMET OPENINGS.
3. Ø2" GROMMET OPENINGS ARE ORIENTED 180° APART. OTHER HOLE LOCATIONS AND/OR SIZES MUST BE SPECIFIED WHEN ORDERING.
4. PLYWOOD COVER IS 1/2" NOMINAL THICKNESS, GRADE CC.
5. (2) Ø2" GROMMETS (STD) ARE SHIPPED UNASSEMBLED WITH BASE.
6. A COPPER GROUND LUG IS INCLUDED.
7. CARBON STEEL BASES ARE HOT DIP GALVANIZED PER ASTM A123.
8. AVAILABLE OPTIONS, SPECIFIED WHEN ORDERING, INCLUDE:
 - DRAIN COUPLING
 - STAINLESS STEEL CONSTRUCTION
 - REPLACEABLE STAINLESS STEEL THREADED INSERTS
9. THIS PRODUCT IS CERTIFIED PER FAA ADVISORY CIRCULAR AC150/5345-42 (CURRENT REV).

FAA TYPE	NOM DIA	MMC TYPE	'ODT'	'IDT'	'BC'	'IDC'	'ODB'
L-867B	12"	127CG	13.500	9.250	10.250	12.250	13.000
L-867D	16"	167CG	17.375	12.375	14.250	16.250	17.375
L-867E	24"	247CG	24.000	20.000	21.500	22.500	24.000


DWN: DOUG F.	L-867 LIGHT BASE WITH GROMMETS	
DATE: 1/18/2019		
SCALE: NTS	 622 6TH ST. SO. WINSTED, MN 55395	7CG
SHEET 1 OF 1		

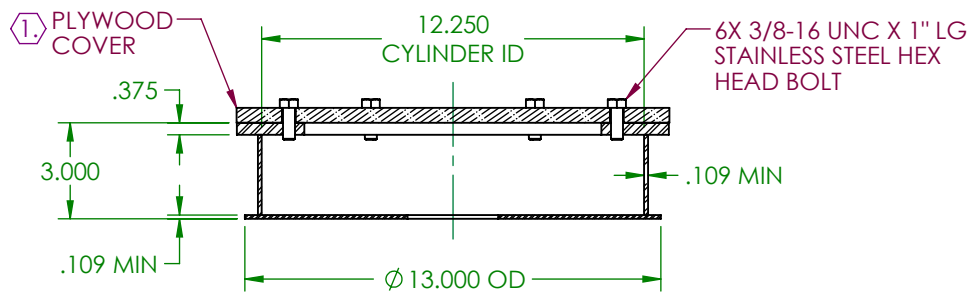
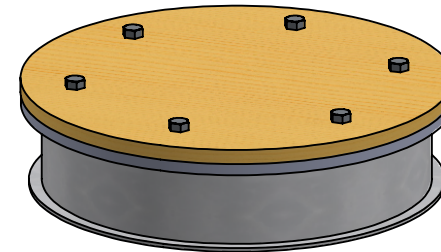
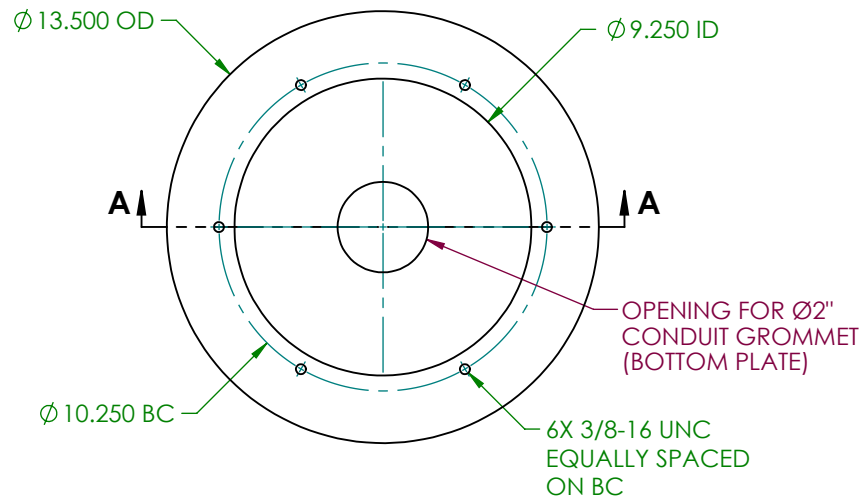


SECTION A-A
WITH PLYWOOD COVER
AND MACHINE SCREWS

NOTE:

1. PLYWOOD COVER IS 1/2" NOMINAL THICKNESS, GRADE CC.
2. THREADS INSIDE THE COUPLING ARE PROTECTED WITH AN LDPE PLUG.
3. A GALVANIZED STEEL COVER WITH A 3/4" MAXIMUM THICKNESS, PURCHASED SEPARATELY, MAY BE SUBSTITUTED FOR THE PLYWOOD COVER.
4. FINISH-HOT DIP GALVANIZED PER ASTM A123.
5. THIS PRODUCT IS CERTIFIED PER FAA ADVISORY CIRCULAR AC150/5345-42 (CURRENT REV).

DWN: DOUG F.	L-867 LIGHT BASE, Ø12", 3" HIGH, Ø2" CPLG DRAIN	
DATE: 2/16/2018		
SCALE: NTS	 622 6TH ST. SO. WINSTED, MN 55395	127CN03C2
SHEET 1 OF 1		



SECTION A-A
WITH PLYWOOD COVER
AND MACHINE SCREWS

NOTE:

1. PLYWOOD COVER IS 1/2" NOMINAL THICKNESS, GRADE CC.
2. Ø2" GROMMET SHIPPED UNASSEMBLED WITH BASE.
3. A GALVANIZED STEEL COVER WITH A 3/4" MAXIMUM THICKNESS, PURCHASED SEPARATELY, MAY BE SUBSTITUTED FOR THE PLYWOOD COVER.
4. FINISH-HOT DIP GALVANIZED PER ASTM A123.
5. THIS PRODUCT IS CERTIFIED PER FAA ADVISORY CIRCULAR AC150/5345-42 (CURRENT REV).

DWN: DOUG F.	L-867 LIGHT BASE, Ø12", 3" HIGH, Ø2" DRAIN	
DATE: 2/16/2018		
SCALE: NTS	 622 6TH ST. SO. WINSTED, MN 55395	127CN03G2
SHEET 1 OF 1		