
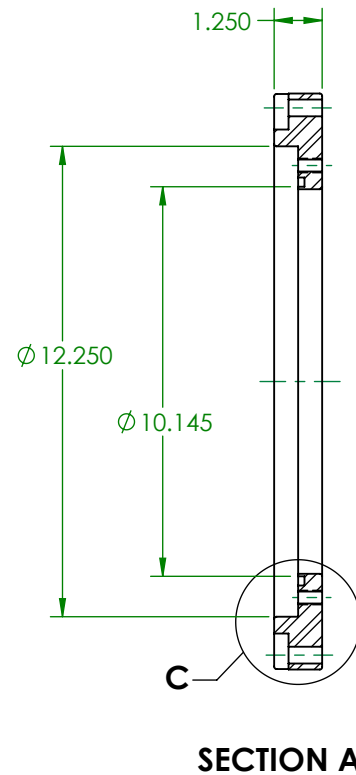
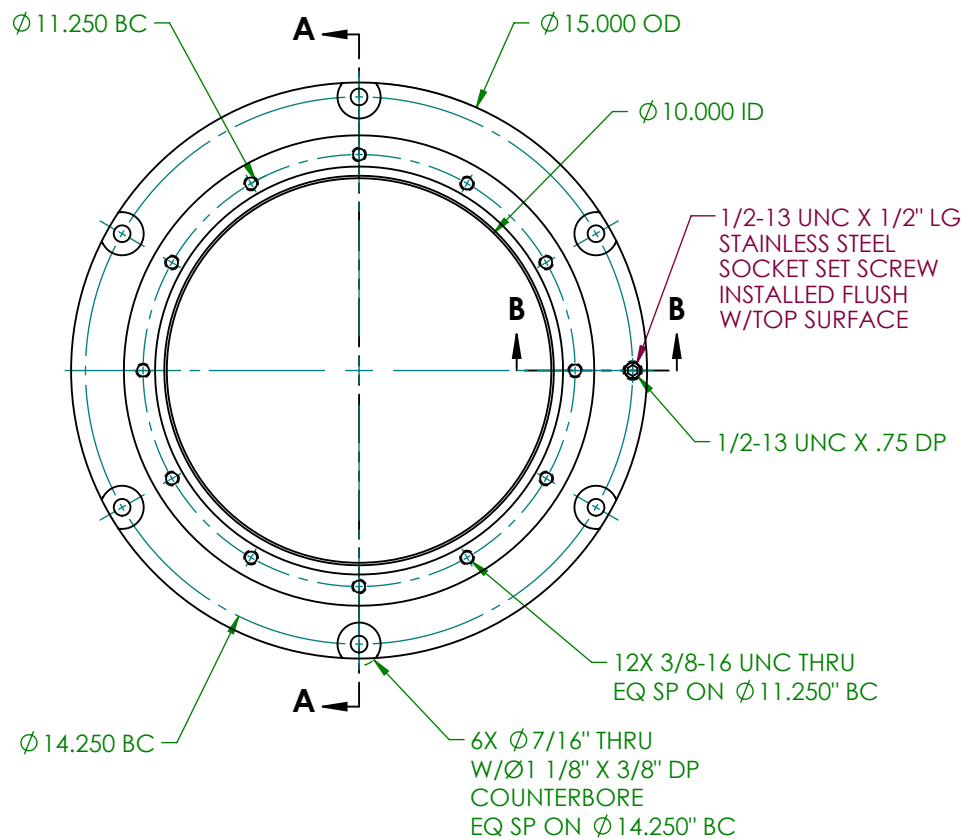


SCALE 1:8

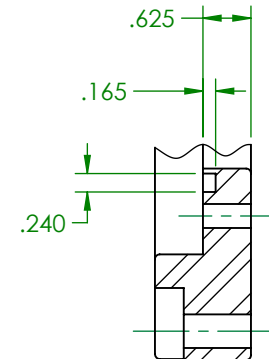
NOTE:

1. (6) 3/8-16 UNC X 2" LG STAINLESS STEEL HEX HEAD BOLTS AND CEC LOCK WASHERS ARE SHIPPED WITH TYPE B ADAPTER PLATE.
- ② 1/2-13 UNC HOLE IS SUPPLIED WITH A 1/2-13 UNC X 1/2" LG SOCKET SET SCREW INSTALLED FLUSH WITH THE TOP SURFACE.
3. MATERIAL-ASTM A572 GRADE 50 STEEL. STAINLESS STEEL IS AVAILABLE AS AN OPTION; SPECIFY WHEN ORDERING.
4. CARBON ADAPTER PLATES ARE HOT DIP GALVANIZED PER ASTM A123.
5. THIS PRODUCT IS CERTIFIED PER FAA ADVISORY CIRCULAR AC150/5345-42 (CURRENT REV).

DWN: DOUG F.	867 TYPE B ADAPTER PLATE	
DATE: 7/24/2017		
SCALE: 1:4	 622 6TH ST. SO. WINSTED, MN 55395	17A0125
SHEET 1 OF 1		



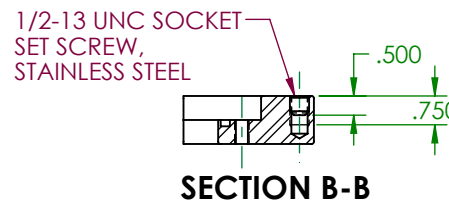
SCALE 1:8




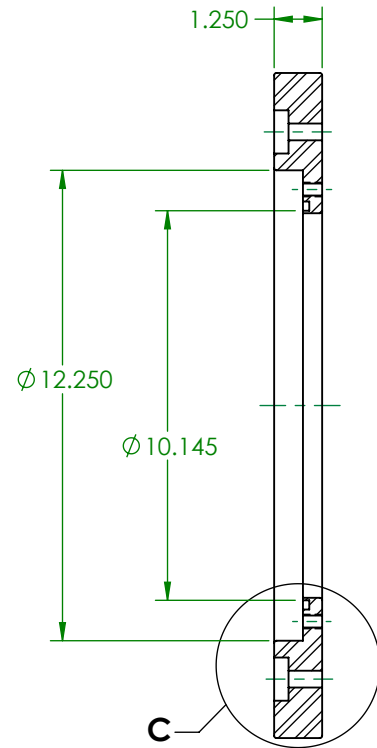
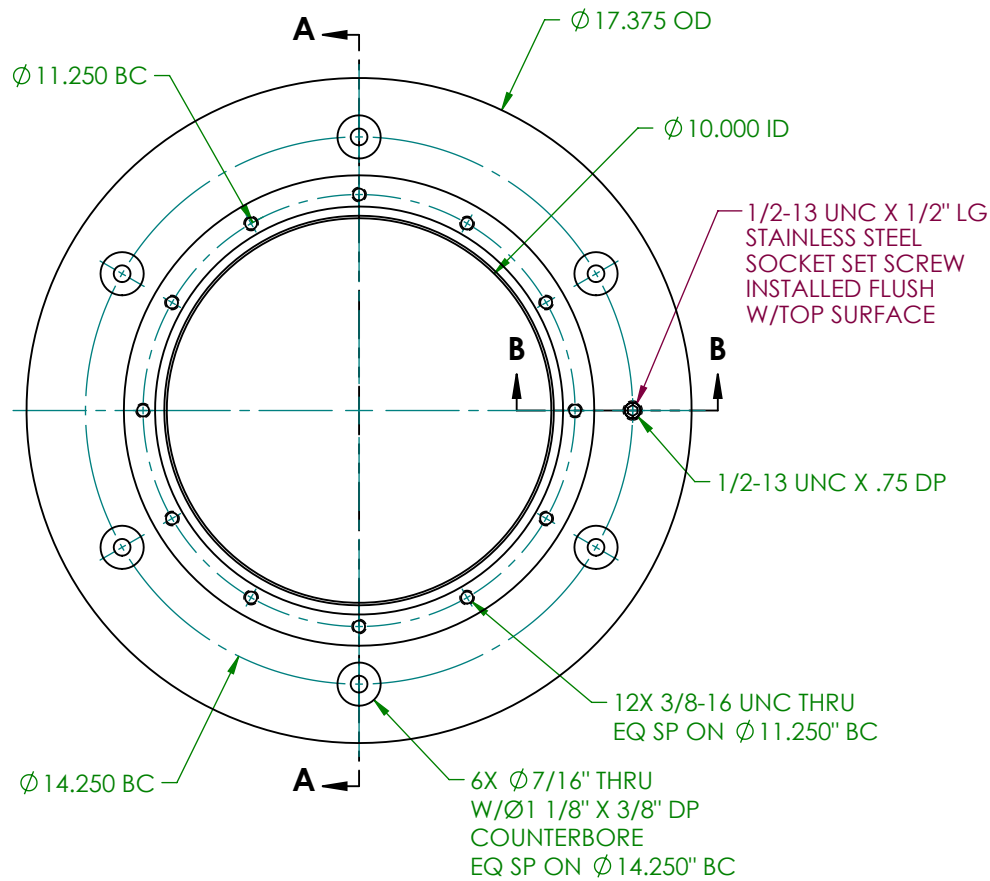
DETAIL C
SCALE 2:5

NOTE:

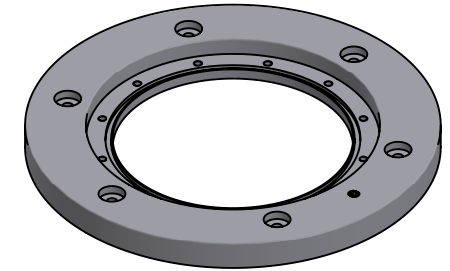
- STANDARD ADAPTER PLATE IS FURNISHED AS SHOWN. IF AZIMUTH CORRECTION IS REQUIRED, IT MUST BE SPECIFIED WHEN ORDERED.
- MATERIAL-ASTM A572 GR 50. STAINLESS STEEL IS AVAILABLE AS AN OPTION; SPECIFY WHEN ORDERING.
- CARBON STEEL ADAPTER PLATES ARE ZINC PLATED PER ASTM B633 TYPE II CLASS I OR HIGHER.
- (6) 3/8-16 UNC X 2" LG STAINLESS STEEL HEX HEAD BOLTS WITH CEC LOCK WASHERS AND AN "O" RING ARE INCLUDED WITH THE ADAPTER PLATE.
- THIS PRODUCT IS CERTIFIED PER FAA ADVISORY CIRCULAR AC150/5345-42 (CURRENT REV).



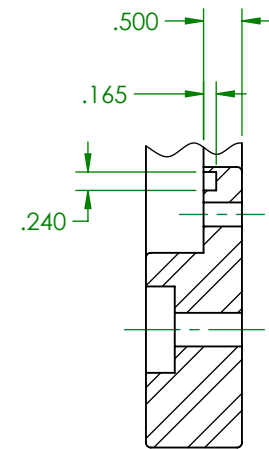
DWN: DOUG F.	L-868 TYPE B ADAPTER PLATE FOR L-868C $\phi 15$ " BASE	
DATE: 8/10/2017		
SCALE: NTS		622 6TH ST. SO. WINSTED, MN 55395
SHEET 1 OF 1		



SECTION A-A



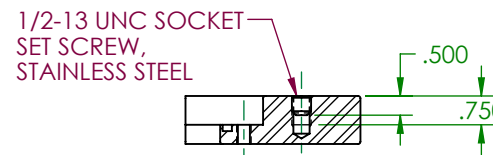
SCALE 1:8



DETAIL C
SCALE 2:5

NOTE:

1. STANDARD ADAPTER PLATE IS FURNISHED AS SHOWN. IF AZIMUTH CORRECTION IS REQUIRED, IT MUST BE SPECIFIED WHEN ORDERED.
2. MATERIAL-ASTM A572 GR 50. STAINLESS STEEL IS AVAILABLE AS AN OPTION; SPECIFY WHEN ORDERING.
3. CARBON STEEL ADAPTER PLATES ARE ZINC PLATED PER ASTM B633 TYPE II CLASS I OR HIGHER.
4. (6) 3/8-16 UNC X 2" LG STAINLESS STEEL HEX HEAD BOLTS WITH CEC LOCK WASHERS AND AN "O" RING ARE INCLUDED WITH THE ADAPTER PLATE.
5. THIS PRODUCT IS CERTIFIED PER FAA ADVISORY CIRCULAR AC150/5345-42 (CURRENT REV).



SECTION B-B

DWN: DOUG F.	L-868 TYPE B ADAPTER PLATE	
DATE: 8/10/2017		
SCALE: NTS		622 6TH ST. SO. WINSTED, MN 55395
SHEET 1 OF 1		