

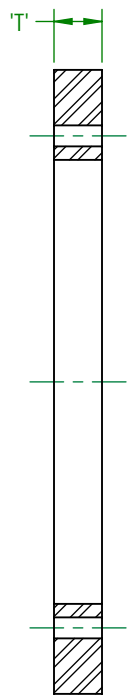
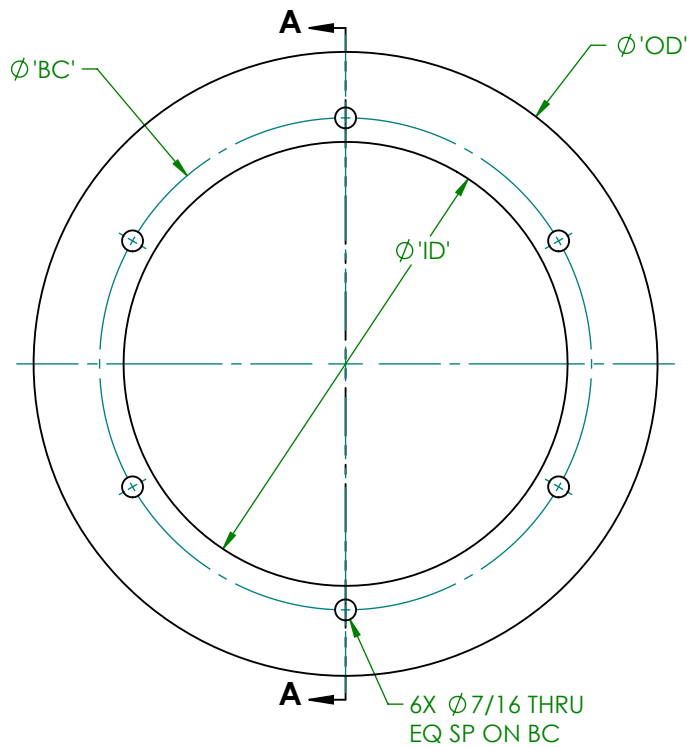
SECTION A-A

NOTE:

1. 'T'= THICKNESS IN SIXTEENTHS FROM 1/16" TO 2 3/16". SPECIFY WHEN ORDERING.
2. MATERIAL-ASTM A36 STEEL. STAINLESS STEEL IS AVAILABLE AS AN OPTION; SPECIFY WHEN ORDERING.
3. CARBON STEEL RINGS, GREATER THAN 1/4" THICK, ARE HOT DIP GALVANIZED PER ASTM A123. CARBON STEEL RINGS, 1/4" THICK OR LESS, ARE ZINC PLATED PER ASTM B633 TYPE II CLASS I OR HIGHER.
4. THIS PRODUCT IS CERTIFIED PER FAA ADVISORY CIRCULAR AC150/5345-42 (CURRENT REV).

FAA TYPE	NOM DIA	MMC TYPE	'OD'	'BC'	'ID'
L-868A	8"	88S	8.000	7.250	6.500
L-868B	12"	128S	12.000	11.250	10.000
L-868C	15"	158S	15.000	14.250	13.000

DWN: DOUG F.	L-868 SPACER RING, Ø8", Ø12" & Ø15"		
DATE: 8/10/2017			
SCALE: NTS		622 6TH ST. SO. WINSTED, MN 55395	8S
SHEET 1 OF 1			



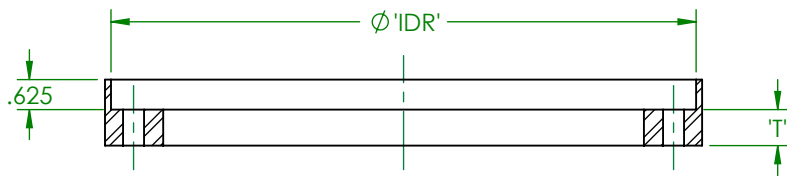
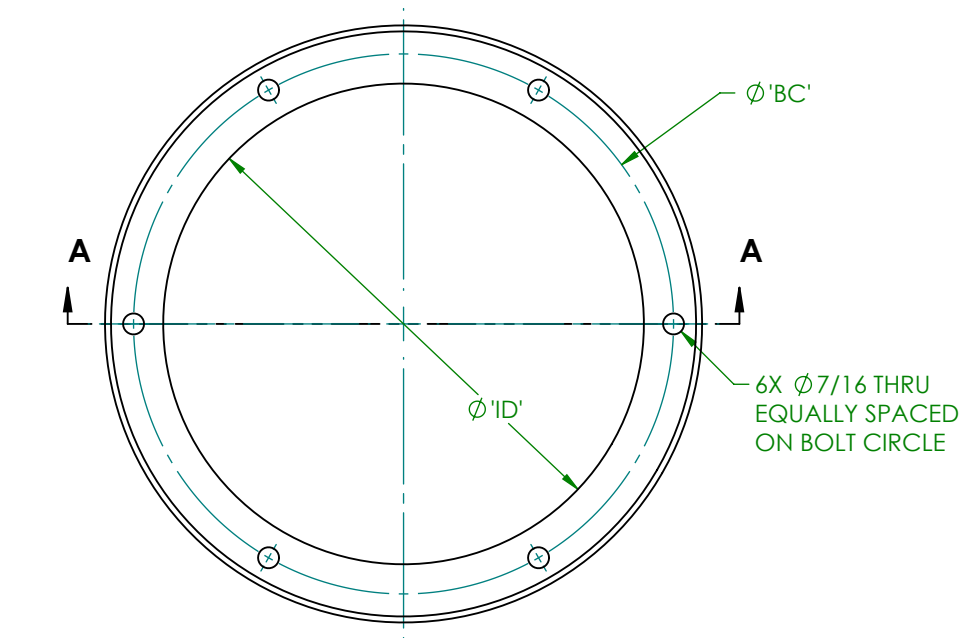
**SECTION A-A**

**NOTE:**

1. 'T'= THICKNESS IN SIXTEENTHS FROM 1/16" TO 1 15/16". SPECIFY WHEN ORDERING.
2. MATERIAL-ASTM A36 STEEL. STAINLESS STEEL IS AVAILABLE AS AN OPTION; STECFY WHEN ORDERING.
3. CARBON STEEL RINGS, GREATER THAN 1/4" THICK, ARE HOT DIP GALVANIZED PER ASTM A123. CARBON STEEL RINGS, 1/4" THICK OR LESS, ARE ZINC PLATED PER ASTM B633 TYPE II CLASS I OR HIGHER.
4. THIS PRODUCT IS CERTIFIED PER FAA ADVISORY CIRCULAR AC150/5345-42 (CURRENT REV).

FAA TYPE	NOM DIA	MMC TYPE	'OD'	'BC'	'ID'
L-868A	8"	88SMB	9.000	6.250	5.250
L-868B	12"	128SMB	13.000	10.250	9.250
L-868C	15"	158SMB	16.000	13.250	12.375

DWN: DOUG F.	L-868 SPACER RING-MIDDLE & BOTTOM SECTIONS		
DATE: 8/10/2017			
SCALE: NTS	 622 6TH ST. SO. WINSTED, MN 55395	8SMB	
SHEET 1 OF 1			



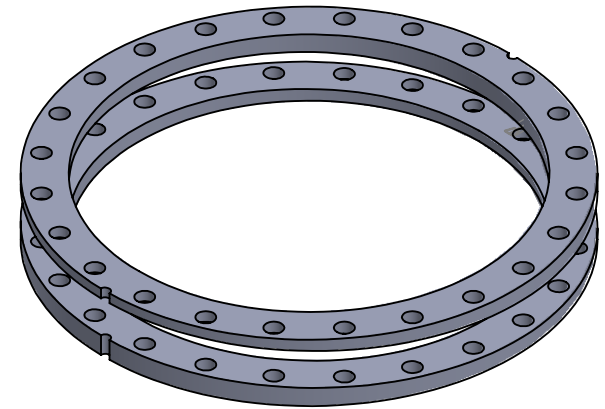
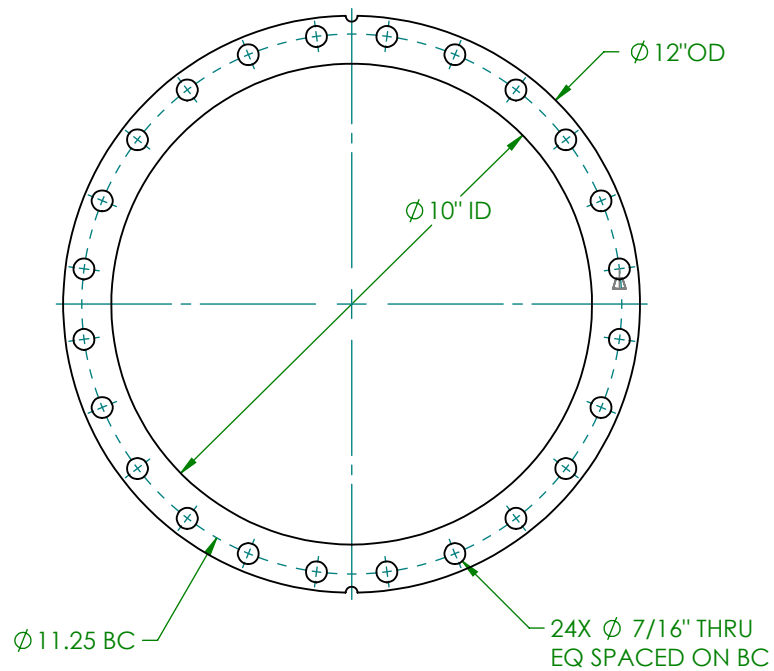
**SECTION A-A**

FAA TYPE	NOM DIA	MMC TYPE	'IDR'	'BC'	'ID'
L-868A	8"	88SY	8.160	7.250	6.500
L-868B	12"	128SY	12.160	11.250	10.000
L-868C	15"	158SY	15.160	14.250	13.000

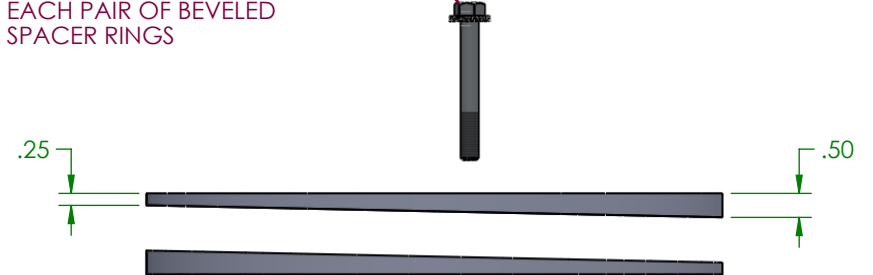
**NOTE:**

1. 'T' = THICKNESS IN SIXTEENTHS FROM 1/4" TO 1 15/16". SPECIFY WHEN ORDERING.
2. (6) 3/8-16 UNC STAINLESS STEEL HEX HEAD BOLTS AND CEC LOCK WASHERS ARE SHIPPED WITH L-868 Y SPACER RING. BOLT LENGTH IS BASED ON AND IS SUITABLE FOR THE THICKNESS OF THE Y SPACER RING ORDERED. IF Y SPACER RING IS TO BE STACKED OVER A SPACER RING, THE SPACER RING THICKNESS MUST BE ACCOUNTED FOR IN BOLT LENGTH DETERMINATION TO PROVIDE A MINIMUM OF 1/2" THREAD ENGAGEMENT.
3. MATERIAL-ASTM A36 STEEL. STAINLESS STEEL IS AVAILABLE AS AN OPTION; SPECIFY WHEN ORDERING.
4. CARBON STEEL RINGS, GREATER THAN 1/4" THICK, ARE HOT DIP GALVANIZED PER ASTM A123. CARBON STEEL RINGS, 1/4" THICK OR LESS, ARE ZINC PLATED PER ASTM B633 TYPE II CLASS I OR HIGHER.
5. THIS PRODUCT IS CERTIFIED PER FAA ADVISORY CIRCULAR AC150/5345-42 (CURRENT REV).

DWN: DOUG F.	L-868 SPACER RING WITH PAVEMENT DAM	
DATE: 8/10/2017		
SCALE: NTS	 622 6TH ST. SO. WINSTED, MN 55395	8SY
SHEET 1 OF 1		



(6) 3/8-16UNC X 3" LG SS FULLY  
 THREADED HEX HEAD BOLTS &  
 (6) 3/8" SS TWO PIECE WEDGE  
 LOCK WASHERS SUPPLIED WITH  
 EACH PAIR OF BEVELED  
 SPACER RINGS



BEVELED SPACER RINGS ARE SOLD IN PAIRS

NOTES:

1. MATERIAL-ASTM A36.
2. FINISH-ZINC PLATED PER ASTM B633 TYPE II CLASS I OR HIGHER.
3. THIS PRODUCT IS CERTIFIED PER FAA ADVISORY CIRCULAR AC150/5345-42 (CURRENT REV).

DWN: DOUG F.	12" BEVELED SPACER RING PAIR		128TRD
DATE: 1/10/2019			
SCALE: 1:4		622 6TH ST. SO. WINSTED, MN 55395	
SHEET 1 OF 1			