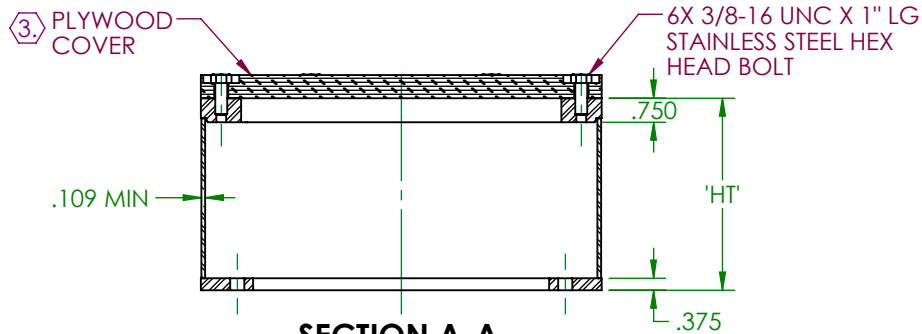
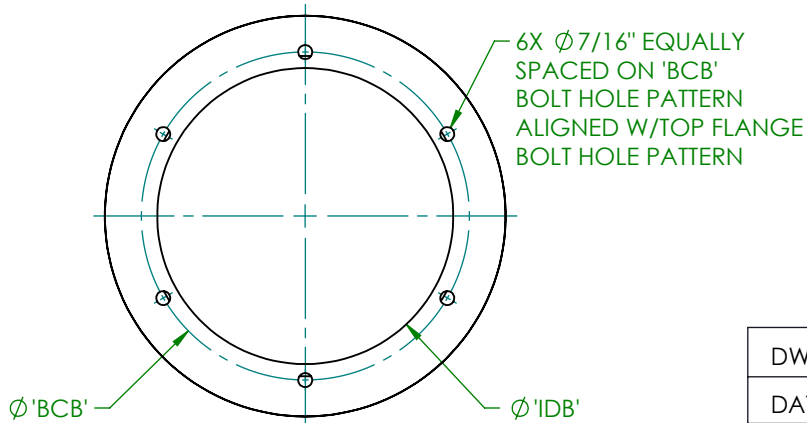


FOR 8 IN. SIZE HOLES ARE LOCATED AT 60°, 120°, 240°, AND 300°. WHEN USING ONLY TWO BOLTS THE 120° AND 300° LOCATIONS SHALL BE USED.



SECTION A-A
WITH PLYWOOD COVER
AND MACHINE SCREWS




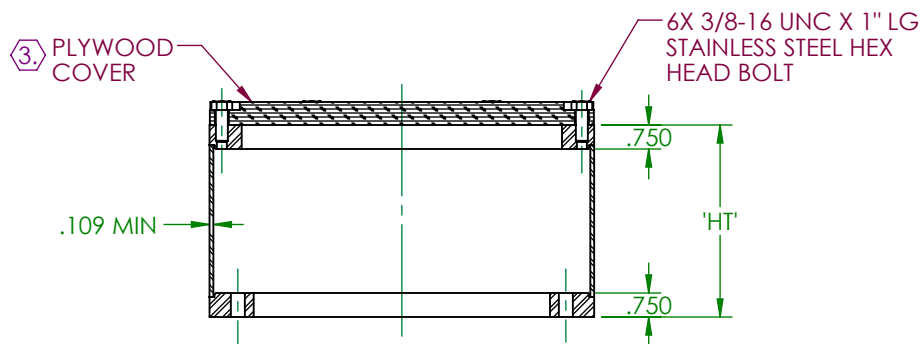
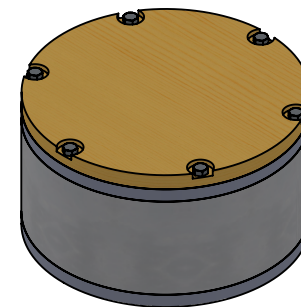
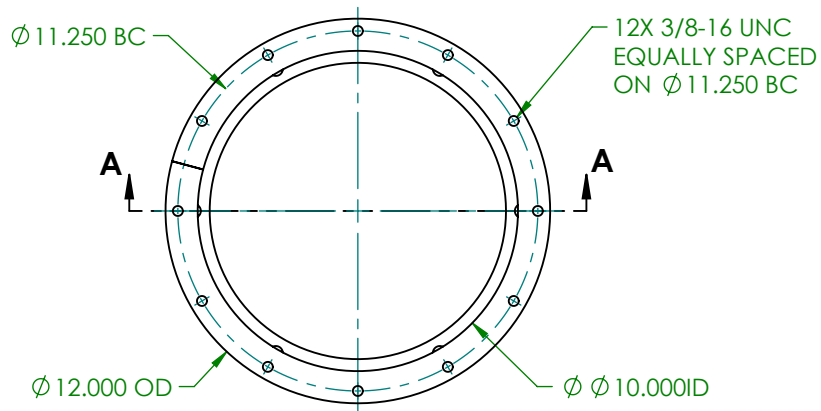
BOTTOM VIEW

NOTE:

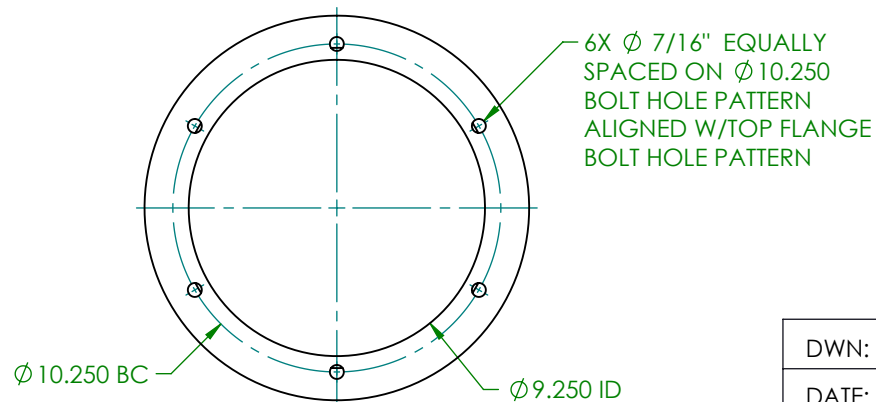
1. 'HT'= HEIGHT TO ORDER. MINIMUM HEIGHT IS 2.0".
2. (6) CEC LOCK WASHERS ARE SHIPPED UNASSEMBLED WITH THE L-868 TOP SECTION.
3. PLYWOOD OR POLYOYMER COVER FOR L-868 TOP SECTION IS 3/4" NOMINAL THICKNESS, GRADE CC. PLYWOOD COVER DIAMETERS:
 - L-868 8" NOM. OD: 3/4" THICK
 - L-868 12" NOM OD: 3/4" THICK
 - L-868 15" NOM OD: 1 1/4" THICK
4. CARBON STEEL SECTIONS ARE HOT DIP GALVANIZED PER ASTM A123.
5. AVAILABLE OPTIONS, SPECIFIED WHEN ORDERING, INCLUDE:
 - LOAD RING
 - STAINLESS STEEL CONSTRUCTION
 - REPLACEABLE STAINLESS STEEL THREADED INSERTS
6. THIS PRODUCT IS CERTIFIED PER FAA ADVISORY CIRCULAR AC150/5345-42 (CURRENT REV).

FAA TYPE	NOM DIA	MMC TYPE	'OD'	'BCT'	'BCB'	'IDT'	'IDB'
L-868A	8"	88TS	8.500	7.250	6.250	6.500	5.250
L-868B	12"	128TS	12.500	11.250	10.250	10.000	9.250
L-868C	15"	158TS	15.500	14.250	13.250	13.000	12.375

DWN: DOUG F.	L-868 TOP SECTION		
DATE: 8/1/2017			
SCALE: NTS		622 6TH ST. SO. WINSTED, MN 55395	8TS
SHEET 1 OF 1			




SECTION A-A
WITH PLYWOOD COVER
AND MACHINE SCREWS



BOTTOM VIEW

NOTE:

1. 'HT'= HEIGHT TO ORDER. MINIMUM HEIGHT IS 2.25".
2. (6) CEC LOCK WASHERS ARE SHIPPED UNASSEMBLED WITH THE L-868 TOP SECTION.
- ③ PLYWOOD COVER FOR L-868 TOP SECTION IS 3/4" NOMINAL THICKNESS, GRADE CC. PLYWOOD COVER DIAMETERS:
4. CARBON STEEL SECTIONS ARE HOT DIP GALVANIZED PER ASTM A123.
5. AVAILABLE OPTIONS, SPECIFIED WHEN ORDERING, INCLUDE:
 - LOAD RING
 - STAINLESS STEEL CONSTRUCTION
 - REPLACEABLE STAINLESS STEEL THREADED INSERTS
6. THIS PRODUCT IS CERTIFIED PER FAA ADVISORY CIRCULAR AC150/5345-42 (CURRENT REV).

DWN: DOUG F.	L-868 TOP SECTION, ALASKA	
DATE: 1/3/2020		
SCALE: NTS		622 6TH ST. SO. WINSTED, MN 55395
SHEET 1 OF 1		