



APT (PATHWAY TAPERED)

ANCHOR BOLTS

Anchor bolts conform to ASTM F1554 Grade-55 standards. Bolts have an "L" bend at one end and a minimum of 12" galvanized threads on the other end. Two galvanized flat washers per ASTM F436 and two galvanized hexagonal nuts per ASTM A563 Grade DH are provided with each bolt.

BASE STYLE

Each pole assembly is fashioned with a Millerbernd Manufacturing Company Decorative High Base. The base is fabricated from the same material as the pole shaft and stands 34 inches tall. The pole shaft is slip fitted and welded to the base.

SHAFT

The pole shaft conforms to ASTM A1011 Grade 50 (carbon steel) or ASTM A240 Grade 201LN (stainless steel) standards and is formed with a constant linear taper.

HANDHOLE

A reinforced handhole with flush mounted cover, grounding lug, and hardware is provided with each pole assembly.

MOUNTING OPTIONS

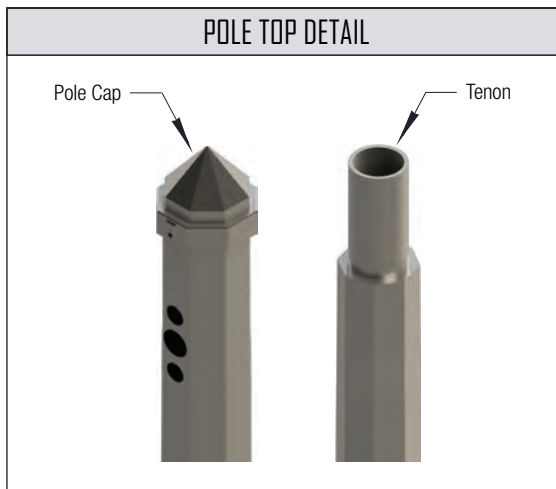
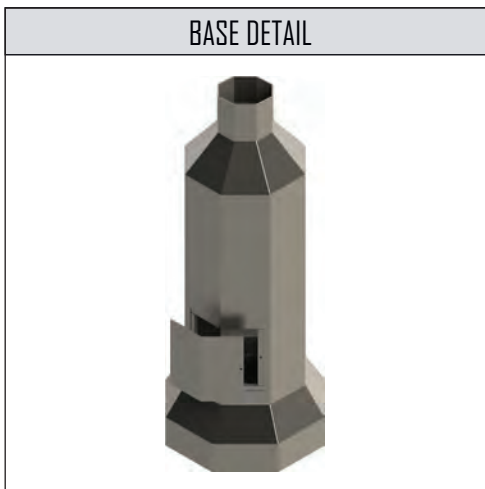
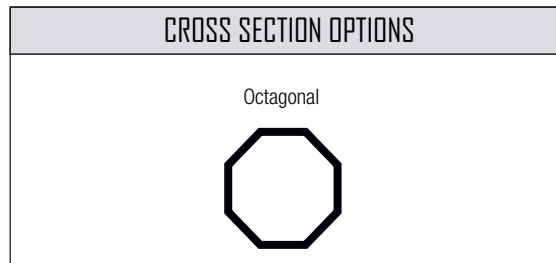
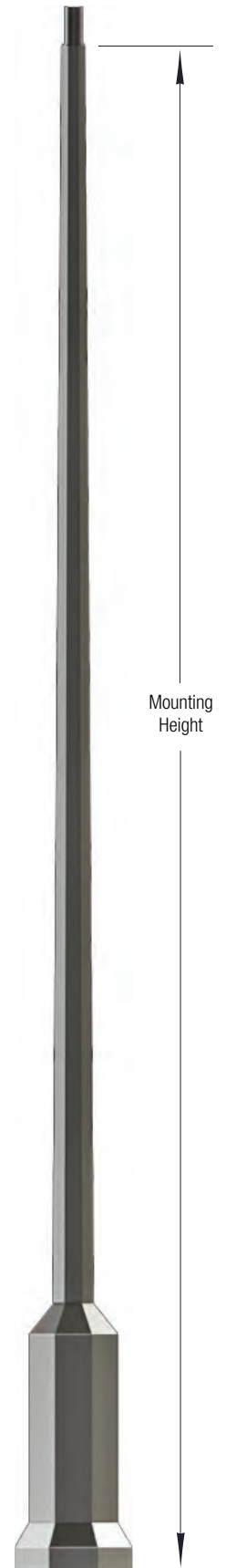
The pole may be specified with a single tenon mount for pole top mounting or side drilled pattern. For multiple fixtures, an adapter (found on pages 64-68 of this catalog) should be used. A removable pole cap is provided for poles specified with side drill luminaire mounting.

FINISH OPTIONS

Carbon steel poles may be specified as hot-dip galvanized per ASTM A123 and/or finish painted with our standard Millerbond Wet Coat Finish. Multi-sided stainless steel poles may be specified as frost (rust resistant stainless steel shot blast) finished or finish painted with our standard Millerbond Wet Coat Finish.

HARDWARE

All hardware and fasteners are supplied with each pole assembly. All structural fasteners are galvanized high-strength (carbon steel) or 18-8 (stainless steel).





CARBON STEEL

PART #	MOUNTING HEIGHT (FT)	WEIGHT (LBS.)	BASE O.D. (IN)	TOP O.D. (IN)	BOLT CIRCLE (IN)	BASE SQUARE (IN)	MAX EPA 90 MPH	MAX EPA 100 MPH	MAX EPA 110 MPH	MAX EPA 120 MPH	MAX EPA 130 MPH	MAX EPA 140 MPH	MAX EPA 150 MPH
APT-H-065-A-080	8	91	6.5	4	10.5	18.5	58.31	47.55	39.12	32.67	27.68	23.74	20.56
APT-H-065-A-100	10	104	6.5	4	10.5	18.5	47.6	38.23	31.34	26.12	22.07	18.86	16.28
APT-H-070-A-120	12	119	7	4	10.5	18.5	39.45	31.6	25.81	21.42	18.01	15.31	13.14
APT-H-070-A-150	15	139	7	4	10.5	18.5	28.29	22.47	18.16	14.89	12.34	10.32	8.69
APT-H-070-A-200	20	173	7	4	10.5	18.5	20.48	16.03	12.73	10.22	8.26	6.71	5.45
APT-H-070-A-250	25	197	7	4	10.5	18.5	18.78	14.57	11.43	9.01	7.12	5.61	4.38
APT-H-070-A-300	30	230	7	4	10.5	18.5	13.41	10.03	7.49	5.55	4.02	2.8	1.81
APT-H-075-A-350	35	274	7.5	4	10.5	18.5	11.45	8.23	5.81	3.95	2.49	1.32	
APT-H-075-A-400	40	309	7.5	4	10.5	18.5	7.87	5.13	3.06	1.48			

STAINLESS STEEL

PART #	MOUNTING HEIGHT (FT)	WEIGHT (LBS.)	BASE O.D. (IN)	TOP O.D. (IN)	BOLT CIRCLE (IN)	BASE CIRCLE (IN)	MAX EPA 90 MPH	MAX EPA 100 MPH	MAX EPA 110 MPH	MAX EPA 120 MPH	MAX EPA 130 MPH	MAX EPA 140 MPH	MAX EPA 150 MPH
APT-H-065-E-080	8	78	6.5	4	10.5	18.5	36.01	29.37	24.39	20.57	17.58	15.19	13.26
APT-H-065-E-100	10	86	6.5	4	10.5	18.5	31.77	25.67	21.12	17.63	14.9	12.73	10.97
APT-H-070-E-120	12	95	7	4	10.5	18.5	29.23	23.52	19.26	16	13.44	11.41	9.76
APT-H-070-E-150	15	107	7	4	10.5	18.5	20.86	16.56	13.35	10.88	8.96	7.42	6.18
APT-H-070-E-200	20	128	7	4	10.5	18.5	14.87	11.56	9.07	7.17	5.68	4.49	3.53
APT-H-070-E-250	25	134	7	4	10.5	18.5	9.84	7.29	5.37	3.91	2.76	1.84	1.09
APT-H-070-E-300	30	159	7	4	10.5	18.5	6.23	4.17	2.63	1.44	0.51		
APT-H-075-E-350	35	186	7.5	4	10.5	18.5	4.09	2.21	0.81				
APT-H-075-F-350	35	254	7.5	4	10.5	18.5	11.19	8.03	5.66	3.83	2.39	1.24	
APT-H-075-F-400	40	286	7.5	4	10.5	18.5	7.65	4.96	2.94	1.38			

1. Variations from above sizes are available. Consult factory for allowable weight and EPA ratings for custom sizes.
2. Charted weights include the base and pole shaft.

Design	Base Style	Base Diameter	Wall Thickness	Mounting Height	Mounting Style		Cross Section	Finish	Options
APT - H -	H = High	Base diameter is identified with one decimal place to identify diameter in inches. (e.g. 094 = 9.4")	A = 11 GA B = 7 GA C = 3/16" D = 1/4 " E = 14 ga Stainless Steel F = 12 ga Stainless Steel	Mounting height is identified with one decimal place to identify height in feet. (e.g. 255=25.5')	DM19 = Drill 1 @ 90 DM29 = Drill 2 @ 90 DM28 = Drill 2 @ 180 DM39 = Drill 3 @ 90 DM32 = Drill 3 @ 120 DM49 = Drill 4 @ 90	PT1 = 2.38" x 4" Tenon PT2 = 2.38" x 6" Tenon PT3 = 2.88" x 4" Tenon PT4 = 3.5" x 6" Tenon PT5 = 4" x 6" Tenon PT6 = Specialty Top Mount	H = 8-Sided	GV = Hot Dip-Galvanize FP = Finish Paint GP = Paint Over Galvanize FR = Frost (Stainless Steel Only)	Insert Part Number for options, separated by "-"