



# SD1 (DAVIT) CARBON STEEL

## ANCHOR BOLTS

Anchor bolts conform to ASTM F1554 Grade-55 standards. Bolts have an "L" bend at one end and a minimum of 12" galvanized threads on the other end. Two galvanized flat washers per ASTM F436 and two galvanized hexagonal nuts per ASTM A563 Grade DH are provided with each bolt.

## ANCHOR BASE

The base plate is fabricated from ASTM A36 carbon steel. The base is fabricated with slotted bolt holes to allow for a +/- 0.5" variance in listed nominal bolt circle size. The base plate telescopes the pole shaft and is circumferentially welded top and bottom.

## HIGH BASE

Each pole assembly is fashioned with a Millerbernd Manufacturing Company High Base. The base is fabricated from the same material as the pole shaft and stands 27 inches tall. The pole shaft is slip fitted and welded to the base.

## DIRECT-EMBEDDED BASE

Each pole assembly is fashioned with a direct embedded base. The base extends below the ground line and is fitted with a 1 inch coupling located 2' below the ground line for wire entrance. The direct embedded base is fashioned with an anti-rotation bearing strap on the bottom of the base.

## SHAFT

The pole shaft conforms to ASTM A1011 Grade 50 carbon steel standards.

## HANDHOLE

A reinforced handhole with cover, grounding lug, and hardware is provided with each pole assembly. Pole assemblies fabricated with a High-Base are provided with a flush mounted handhole with cover, grounding lug, and hardware.

## ARMS

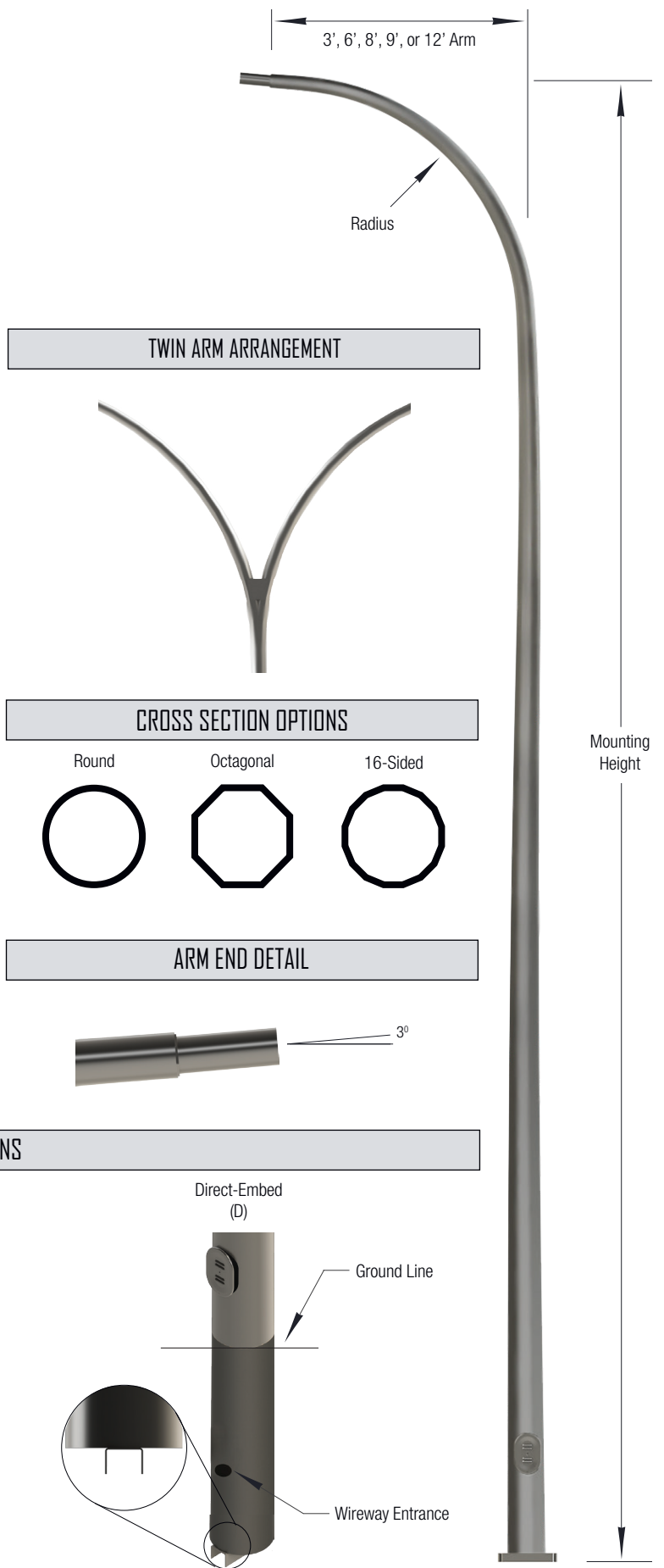
Single arm SD1 poles are fabricated of a single piece construction with an integral curved arm and a minimum of a one foot horizontal on the tangent of the curve. A two piece (shaft and arm) construction is used when twin arms are specified. Arms are fitted with a 2.38" diameter pipe adapter with 3 degrees nominal rise from the roadway. SD1 style arms measure 3, 6, 8, 9, or 12 feet in length from the center of the pole shaft.

## FINISHING

Carbon steel poles may be specified as hot-dip galvanized per ASTM A123 and/or finish painted with our standard Millerbond Wet Coat Finish.

## HARDWARE

All hardware and fasteners are supplied with each pole assembly. All structural fasteners are galvanized high-strength carbon steel.



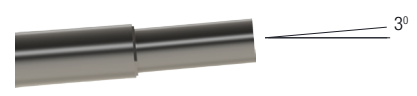
### TWIN ARM ARRANGEMENT



### CROSS SECTION OPTIONS

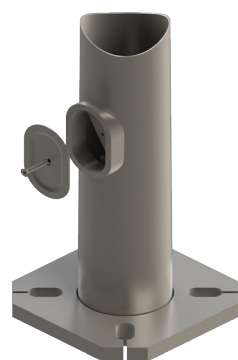


### ARM END DETAIL

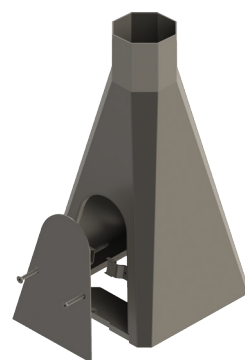


### BASE OPTIONS

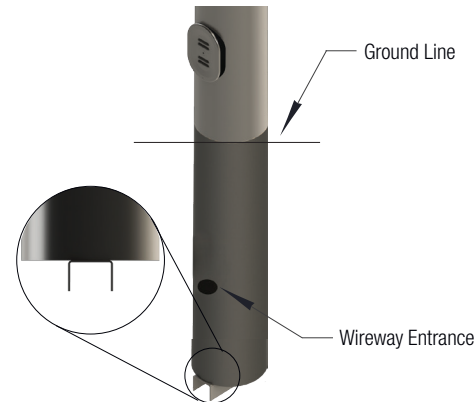
Anchor Base (A)



High-Base (H)



Direct-Embed (D)





### ANCHOR BASE

PART#	MOUNTING HEIGHT (FT)	MAX ARM LENGTH (FT)	WEIGHT (LBS.)	BASE O.D. (IN)	TOP O.D. (IN)	BOLT CIRCLE +/- 0.5 (IN)	BASE SQUARE (IN)	MAX EPA 90 MPH	MAX EPA 100 MPH	MAX EPA 110 MPH	MAX EPA 120 MPH	MAX EPA 130 MPH	MAX EPA 140 MPH	MAX EPA 150 MPH
SD1-121-A-069-A-250	25	12	184	6.9	4	10	10	12.44	12.44	10.8	8.4	6.47	4.9	3.61
SD1-121-A-076-A-300	30	12	233	7.6	4	10.5	10.5	10.87	10.87	9.85	7.49	5.61	4.09	2.83
SD1-121-A-084-A-350	35	12	289	8.4	4	11.5	11.5	9.93	9.93	8.86	6.75	4.92	3.41	2.16
SD1-121-A-090-A-400	40	12	400	9.1	4	13	13	9.31	9.31	8.41	6.11	4.28	2.78	1.54
SD1-121-A-100-A-500	50	12	489	10	4	13.5	13.5	4.21	4.21	4.21	3.81	2.5	1.44	0.56

### DIRECT-EMBEDDED BASE

PART#	MOUNTING HEIGHT (FT)	MAX ARM LENGTH (FT)	WEIGHT (LBS.)	BASE O.D. (IN)	TOP O.D. (IN)	BURIAL DEPTH (FT)	MAX EPA 90 MPH	MAX EPA 100 MPH	MAX EPA 110 MPH	MAX EPA 120 MPH	MAX EPA 130 MPH	MAX EPA 140 MPH	MAX EPA 150 MPH
SD1-121-D-069-A-250	25	12	188	6.9	4	5	12.44	12.44	10.8	8.4	6.47	4.9	3.61
SD1-121-D-076-A-300	30	12	235	7.6	4	6	10.87	10.87	9.85	7.49	5.61	4.09	2.83
SD1-121-D-084-A-350	35	12	285	8.4	4	6	9.93	9.93	8.86	6.75	4.92	3.41	2.16
SD1-121-D-091-A-400	40	12	340	9.1	4	7	9.31	9.31	8.41	6.11	4.28	2.78	1.54
SD1-121-D-100-A-500	50	12	467	10	4	8	4.21	4.21	4.21	3.81	2.5	1.44	0.56

### HIGH-BASE

PART#	MOUNTING HEIGHT (FT)	MAX ARM LENGTH (FT)	WEIGHT (LBS.)	BASE O.D. (IN)	TOP O.D. (IN)	BOLT CIRCLE (IN)	BASE SQUARE (IN)	MAX EPA 90 MPH	MAX EPA 100 MPH	MAX EPA 110 MPH	MAX EPA 120 MPH	MAX EPA 130 MPH	MAX EPA 140 MPH	MAX EPA 150 MPH
SD1-121-H-070-A-250	25	12	223	7	4	15	15	14.08	11.24	8.45	6.24	4.46	3.02	1.83
SD1-121-H-086-A-300	30	12	284	8.6	4	15	15	15.58	13.96	10.44	7.66	5.45	3.65	2.18
SD1-121-H-096-A-350	35	12	349	9.6	4	15	15	14.61	13.57	9.82	6.88	4.53	2.64	1.09
SD1-121-H-096-A-400	40	12	393	9.6	4	15	15	11.09	9.16	5.89	3.33	1.3		
SD1-121-H-106-A-500	50	12	451	10.6	4	15	15	8.32	6.44	3.82	1.81			

- Variations from above sizes are available. Consult factory for allowable weight and EPA ratings for custom sizes.
- Charts are for single arm configurations only. Consult factory for allowable weight and EPA ratings on twin arm arrangements.
- Charted weights include the base, pole shaft, and luminaire mounting arm.
- The "Base O.D." measurement for direct-embedded structures is taken at the ground line.

Design	Arm Span	Base Style	Base Diameter	Wall Thickness	Mounting Height	Cross-Section	Finish	Options
SD1 -	031 = 3' 061 = 6' 081 = 8' 091 = 9' 121 = 12'	A = Anchor H = High D = Direct Embed	Base diameter is identified with one decimal place to identify diameter in inches. (e.g. 094 = 9.4")	A = 11 GA B = 7 GA C = 3/16" D = 1/4 "	Mounting height is identified with one decimal place to identify height in feet. (e.g. 255=25.5')	R = Round H = 8-Sided W = 16-Sided	GV =Hot Dip-Galvanize FP = Finish Paint GP = Paint Over Galvanize	Insert Part Number for options, separated by "-"