



# SD2 (DAVIT) CARBON STEEL

## ANCHOR BOLTS

Anchor bolts conform to ASTM F1554 Grade-55 standards. Bolts have an "L" bend at one end and a minimum of 12" galvanized threads on the other end. Two galvanized flat washers per ASTM F436 and two galvanized hexagonal nuts per ASTM A563 Grade DH are provided with each bolt.

## ANCHOR BASE

The base plate is fabricated from ASTM A36 carbon steel. The base is fabricated with slotted bolt holes to allow for a +/- 0.5" variance in listed nominal bolt circle size. The base plate telescopes the pole shaft and is circumferentially welded top and bottom.

## HIGH BASE

Each pole assembly is fashioned with a Millerbernd Manufacturing Company High Base. The base is fabricated from the same material as the pole shaft and stands 27 inches tall. The pole shaft is slip fitted and welded to the base.

## DIRECT-EMBEDDED BASE

Each pole assembly is fashioned with a direct embedded base. The base extends below the ground line and is fitted with a 1 inch coupling located 2' below the ground line for wire entrance. The direct embedded base is fashioned with an anti-rotation bearing strap on the bottom of the base.

## SHAFT

The pole shaft conforms to ASTM A1011 Grade 50 carbon steel standards.

## HANDHOLE

A reinforced handhole with cover, grounding lug, and hardware is provided with each pole assembly. Pole assemblies fabricated with a High-Base are provided with a flush mounted handhole with cover, grounding lug, and hardware.

## ARMS

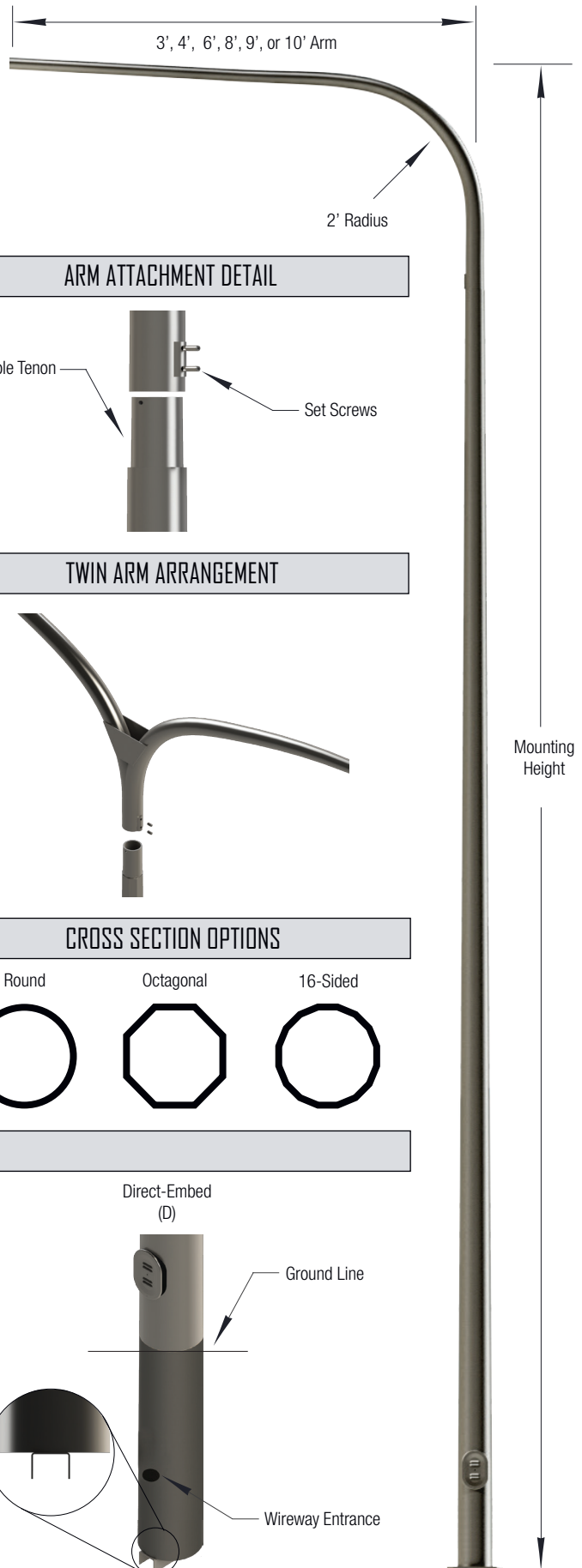
SD2 style arms are fabricated from 11 gauge ASTM A1011 Grade 50 carbon steel. SD2 arms are fitted with a 2.38" x 6" pipe adapter with 3 degrees nominal rise from the roadway for luminaire mounting. Arms are slip fitted onto the pole assembly and secured in place by set screws.

## FINISHING

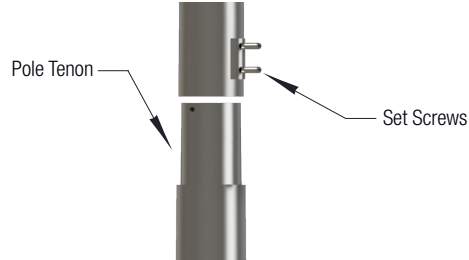
Carbon steel poles may be specified as hot-dip galvanized per ASTM A123 and/or finish painted with our standard Millerbond Wet Coat Finish.

## HARDWARE

All hardware and fasteners are supplied with each pole assembly. All structural fasteners are galvanized high-strength carbon steel.



ARM ATTACHMENT DETAIL



TWIN ARM ARRANGEMENT

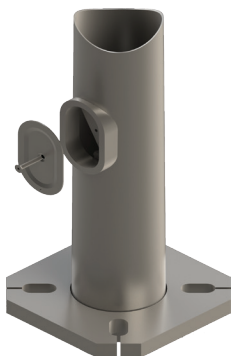


CROSS SECTION OPTIONS

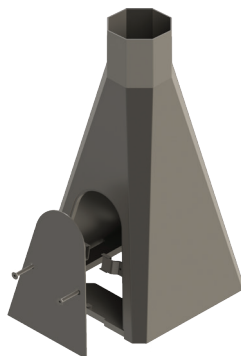


BASE OPTIONS

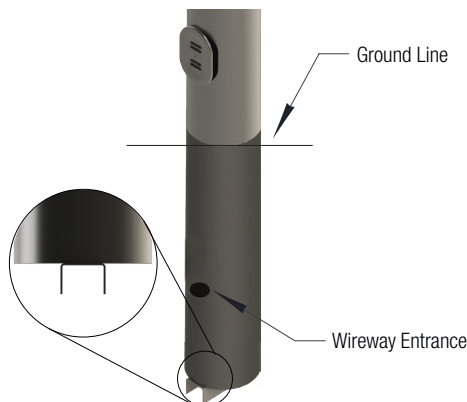
Anchor Base (A)



High-Base (H)



Direct-Embed (D)





### ANCHOR BASE

PART#	MOUNTING HEIGHT (FT)	MAX ARM LENGTH (FT)	WEIGHT (LBS.)	BASE O.D. (IN)	TOP O.D. (IN)	BOLT CIRCLE +/- 0.5 (IN)	BASE SQUARE (IN)	MAX EPA 90 MPH	MAX EPA 100 MPH	MAX EPA 110 MPH	MAX EPA 120 MPH	MAX EPA 130 MPH	MAX EPA 140 MPH	MAX EPA 150 MPH
SE1-101-A-069-A-250	25	10	203	6.9	4	10	10	6.18	6.18	6.18	6.18	6.18	6.11	4.93
SE1-101-A-076-A-300	30	10	248	7.6	4	10.5	10.5	5.65	5.65	5.65	5.65	5.65	5.33	4.19
SE1-101-A-084-A-350	35	10	304	8.4	4	11.5	11.5	5.3	5.3	5.3	5.3	5.3	4.67	3.56
SE1-101-A-091-A-400	40	10	374	9.1	4	13	13	5.05	5.05	5.05	5.05	5.05	4.07	2.97
SE1-101-A-104-A-500	50	10	513	10.4	4	14	14	4.68	4.68	4.68	3.66	2.41	1.37	0.51

### DIRECT-EMBEDDED BASE

PART#	MOUNTING HEIGHT (FT)	MAX ARM LENGTH (FT)	WEIGHT (LBS.)	BASE O.D. (IN)	TOP O.D. (IN)	BURIAL DEPTH (FT)	MAX EPA 90 MPH	MAX EPA 100 MPH	MAX EPA 110 MPH	MAX EPA 120 MPH	MAX EPA 130 MPH	MAX EPA 140 MPH	MAX EPA 150 MPH
SE1-101-D-069-A-250	25	10	192	6.9	4	5	6.18	6.18	6.18	6.18	6.18	6.11	4.93
SE1-101-D-076-A-300	30	10	238	7.6	4	6	5.65	5.65	5.65	5.65	5.65	5.33	4.19
SE1-101-D-084-A-350	35	10	289	8.4	4	6	5.3	5.3	5.3	5.3	5.3	4.67	3.56
SE1-101-D-091-A-400	40	10	344	9.1	4	7	5.05	5.05	5.05	5.05	5.05	4.07	2.97
SE1-101-D-104-A-500	50	10	483	10.4	4	8	4.68	4.68	4.68	3.66	2.41	1.37	0.51

### HIGH-BASE

PART#	MOUNTING HEIGHT (FT)	MAX ARM LENGTH (FT)	WEIGHT (LBS.)	BASE O.D. (IN)	TOP O.D. (IN)	BOLT CIRCLE (IN)	BASE SQUARE (IN)	MAX EPA 90 MPH	MAX EPA 100 MPH	MAX EPA 110 MPH	MAX EPA 120 MPH	MAX EPA 130 MPH	MAX EPA 140 MPH	MAX EPA 150 MPH
SE1-101-H-070-A-250	25	10	204	7	4	15	15	7.05	7.05	7.05	7.05	7.05	6.99	5.76
SE1-101-H-086-A-300	30	10	254	8.6	4	15	15	7.41	7.41	7.41	7.41	7.41	7.41	7.07
SE1-101-H-096-A-350	35	10	309	9.6	4	15	15	7.05	7.05	7.05	7.05	7.05	7.05	6.75
SE1-101-H-096-A-400	40	10	348	9.6	4	15	15	5.92	5.92	5.92	5.92	5.92	5.81	4.53
SE1-101-H-106-A-500	50	10	488	10.6	4	15	15	5.11	5.11	5.11	3.97	2.73	1.7	0.84

1. Variations from above sizes are available. Consult factory for allowable weight and EPA ratings for custom sizes.
2. Charts are for single arm configurations only. Consult factory for allowable weight and EPA ratings on twin arm arrangements.
3. Charted weights include the base, pole shaft, and luminaire mounting arm.
4. The "Base O.D." measurement for direct-embedded structures is taken at the ground line.

Design	Arm Span	Base Style	Base Diameter	Wall Thickness	Mounting Height	Cross-Section	Finish	Options
SD2 -	031 = 3' 041 = 4' 061 = 6' 081 = 8' 091 = 9' 101 = 10'	A = Anchor H = High D = Direct Embed	Base diameter is identified with one decimal place to identify diameter in inches. (e.g. 094 = 9.4")	A = 11 GA B = 7 GA C = 3/16" D = 1/4 "	Mounting height is identified with one decimal place to identify height in feet. (e.g. 255=25.5')	R = Round H = 8-Sided W = 16-Sided	GV =Hot Dip-Galvanize FP = Finish Paint GP = Paint Over Galvanize	Insert Part Number for options, separated by "-"