



ST2 (TRUSS ARM) CARBON STEEL

ANCHOR BOLTS

Anchor bolts conform to ASTM F1554 Grade-55 standards. Bolts have an "L" bend at one end and a minimum of 12" galvanized threads on the other end. Two galvanized flat washers per ASTM F436 and two galvanized hexagonal nuts per ASTM A563 Grade DH are provided with each bolt.

ANCHOR BASE

The base plate is fabricated from ASTM A36 carbon steel. The base is fabricated with slotted bolt holes to allow for a +/- 0.5" variance in listed nominal bolt circle size. The base plate telescopes the pole shaft and is circumferentially welded top and bottom.

HIGH BASE

Each pole assembly is fashioned with a Millerbernd Manufacturing Company High Base. The base is fabricated from the same material as the pole shaft and stands 27 inches tall. The pole shaft is slip fitted and welded to the base.

SHAFT

The pole shaft conforms to ASTM A1011 Grade 50 carbon steel standards.

HANDHOLE

A reinforced handhole with cover, grounding lug, and hardware is provided with each pole assembly. Pole assemblies fabricated with a High-Base are provided with a flush mounted handhole with cover, grounding lug, and hardware.

ARMS

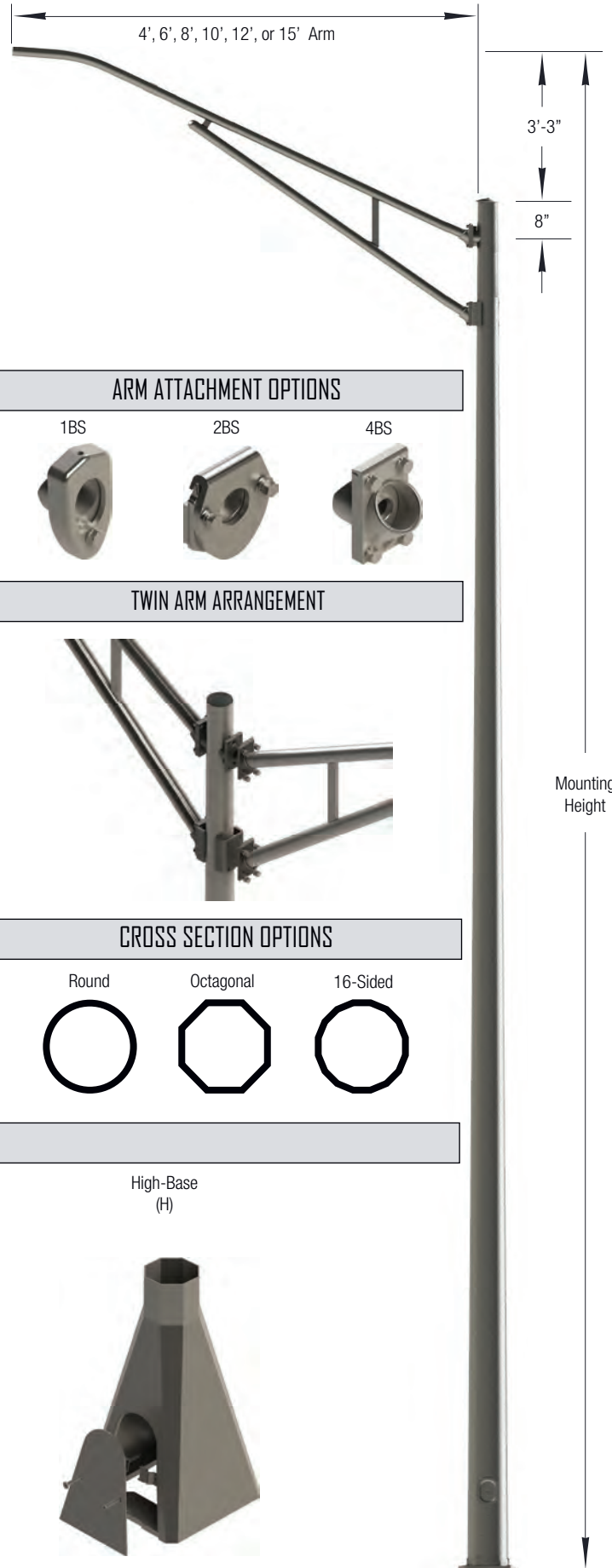
ST2 arms are fabricated from 2" (2.38" O.D.) schedule 40 pipe with a supporting brace fabricated from ASTM A36 carbon steel plate. Each ST2 arm attaches to the pole shaft with a cast steel, mating 4-bolt simplex bracket (optional cast steel, mating 1-bolt (1BS) or 2-bolt (2BS) simplex brackets are available. ST2 arms have a rise of 3 feet and 3 inches from the pole top.

FINISHING

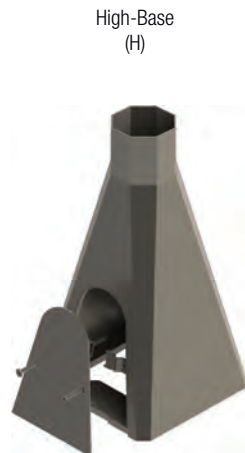
Carbon steel poles may be specified as hot-dip galvanized per ASTM A123 and/or finish painted with our standard Millerbond Wet Coat Finish.

HARDWARE

All hardware and fasteners are supplied with each pole assembly. All structural fasteners are galvanized high-strength carbon steel.



BASE OPTIONS





ANCHOR BASE

PART#	MOUNTING HEIGHT (FT)	MAX ARM LENGTH (FT)	WEIGHT (LBS.)	BASE O.D. (IN)	TOP O.D. (IN)	BOLT CIRCLE +/- 0.5 (IN)	BASE SQUARE (IN)	MAX EPA 90 MPH	MAX EPA 100 MPH	MAX EPA 110 MPH	MAX EPA 120 MPH	MAX EPA 130 MPH	MAX EPA 140 MPH	MAX EPA 150 MPH
ST2-081-A-070-A-250	25	8	233	7	3.96	10	10	7.35	7.35	6.71	5.72	4.86	4.12	3.49
ST2-081-A-075-A-300	30	8	276	7.5	3.76	10.5	10.5	5.84	5.84	5.84	5.51	4.66	3.94	3.33
ST2-081-A-080-A-300	30	8	296	8	4.26	11	11	8.22	7.6	6.48	5.51	4.66	3.94	3.33
ST2-081-A-080-A-350	35	8	320	8	3.56	11	11	4.73	4.73	4.73	4.73	4.5	3.4	2.43
ST2-081-A-085-A-350	35	8	343	8.5	4.06	11.5	11.5	6.78	6.78	6.3	5.33	4.5	3.79	3.2
ST2-081-A-090-A-350	35	8	370	9	4.56	12.5	12.5	8.63	7.41	6.3	5.33	4.5	3.79	3.2
ST2-081-A-090-A-400	40	8	397	9	3.86	12.5	12.5	5.65	5.65	5.65	5.18	4.36	3.61	2.53
ST2-081-A-095-A-400	40	8	424	9.5	4.36	13	13	7.8	7.24	6.14	5.18	4.36	3.67	3.08
ST2-081-A-100-A-500	50	8	502	10	3.45	13.5	13.5	3.94	3.94	3.94	2.79	1.58	0.64	
ST2-151-A-070-A-250	25	15	279	7	3.96	10	10	2.67	2.67	2.04	1.49	1.01	0.6	
ST2-151-A-075-A-300	30	15	322	7.5	3.76	10.5	10.5	1.87	1.87	1.87	1.37	0.9	0.5	
ST2-151-A-080-A-300	30	15	342	8	4.26	11	11	3.13	2.54	1.91	1.37	0.9	0.5	
ST2-151-A-080-A-350	35	15	366	8	3.56	11	11	1.28	1.25	1.28	1.28	0.81		
ST2-151-A-085-A-350	35	15	389	8.5	4.06	11.5	11.5	2.37	2.37	1.81	1.27	0.81		
ST2-151-A-090-A-350	35	15	416	9	4.56	12.5	12.5	3.12	2.43	1.81	1.27	0.81		
ST2-151-A-090-A-400	40	15	443	9	3.86	12.5	12.5	1.77	1.77	1.72	1.19	0.73		
ST2-151-A-095-A-400	40	15	470	9.5	4.36	13	13	2.91	2.34	1.72	1.19	0.73		
ST2-151-A-105-A-500	50	15	582	10.5	3.95	14	14	1.78	1.78	1.57	1.05			

HIGH-BASE

PART#	MOUNTING HEIGHT (FT)	MAX ARM LENGTH (FT)	WEIGHT (LBS.)	BASE O.D. (IN)	TOP O.D. (IN)	BOLT CIRCLE (IN)	BASE SQUARE (IN)	MAX EPA 90 MPH	MAX EPA 100 MPH	MAX EPA 110 MPH	MAX EPA 120 MPH	MAX EPA 130 MPH	MAX EPA 140 MPH	MAX EPA 150 MPH
ST2-081-H-070-A-250	25	8	226	7	4	15	15	7.29	7.29	6.71	5.72	4.86	4.07	2.88
ST2-081-H-086-A-300	30	8	304	8.6	4	15	15	7.72	7.6	6.48	5.51	4.66	3.94	3.31
ST2-081-H-096-A-350	35	8	331	9.6	4	15	15	7.38	7.38	6.3	5.33	4.5	3.83	2.29
ST2-081-H-096-A-400	40	8	403	9.6	4	15	15	6.18	6.18	6.14	4.49	2.48	0.86	
ST2-081-H-106-A-500	50	8	480	10.6	4	15	15	5.35	5.35	2.7				
ST2-151-H-070-A-250	25	15	272	7	4	15	15	2.64	2.64	2.04	1.49	1.01	0.6	
ST2-151-H-086-A-300	30	15	350	8.6	4	15	15	2.87	2.54	1.91	1.37	0.9	0.5	
ST1-151-H-086-A-350	35	15	377	9.6	4	15	15	2.69	2.43	1.81	1.27	0.81		
ST1-151-H-096-A-400	40	15	449	9.6	4	15	15	2.05	2.05	1.72	1.19	0.54		
ST1-151-H-106-A-500	50	15	558	10.6	4	15	15	1.6	1.6	0.69				

- Variations from above sizes are available. Consult factory for allowable weight and EPA ratings for custom sizes.
- Charts are for single arm configurations only. Consult factory for allowable weight and EPA ratings on twin arm arrangements.
- Charted weights include the base, pole shaft, and luminaire mounting arm.
- Unless specified otherwise, luminaire mounting arms attach to the pole shaft with a 4-bolt simplex bracket. To specify a different bracket, insert the bracket part number under options.
- The "Base O.D." measurement for direct-embedded structures is taken at the ground line.

Design	Arm Span	Base Style	Base Diameter	Wall Thickness	Mounting Height	Cross-Section	Finish	Options
ST2 -	041 = 4' 061 = 6' 081 = 8' 101 = 10' 121 = 12' 151 = 15'	A = Anchor H = High	Base diameter is identified with one decimal place to identify diameter in inches. (e.g. 094 = 9.4")	A = 11 GA B = 7 GA C = 3/16" D = 1/4 "	Mounting height is identified with one decimal place to identify height in feet. (e.g. 255=25.5')	R = Round H = 8-Sided W = 16-Sided	GV =Hot Dip-Galvanize FP = Finish Paint GP = Paint Over Galvanize	Insert Part Number for options, seperated by "-"